

3

Name: Eric Tung

Class: 2A (29)

Instructions:

1. Copy the following poem in the space provided.
2. Write in blue or black **pen**.
3. Use **cursive writing**.

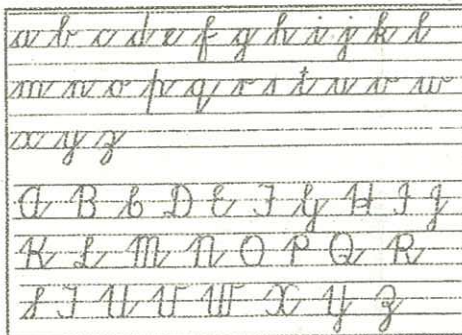
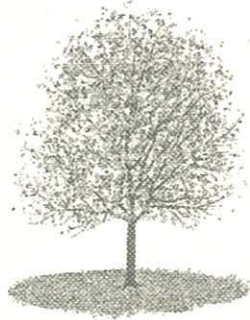
Loveliest of Trees

by A. E. Houseman

Loveliest of trees, the cherry now
 Is hung with bloom along the bough,
 And stands about the woodland ride
 Wearing white for Eastertide.

Now, of my threescore years and ten,
 Twenty will not come again,
 And take from seventy springs a score,
 It only leaves me fifty more.

And since to look at things in bloom
 Fifty springs are little room,
 About the woodlands I will go
 To see the cherry hung with snow.



Loveliest of Trees by A.E. Houseman

Loveliest of trees, the cherry now
 Is hung with bloom along the bough,
 And stands about the woodland ride
 Wearing white for Eastertide.

Now, of my threescore years and ten,
 Twenty will not come again,
 And take from seventy springs a score,
 It only leaves me fifty more.

And since to look at things in bloom
 Fifty springs are little room,
 About the woodlands I will go
 To see the cherry hung with snow.